

HD-IP AI Speed Dome Quick User Manual

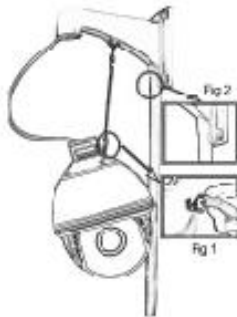
1. Installation Notice



1. With DC12V power supply, the extended distance of power cable can not exceed than 5M, otherwise, the dome may suffer insufficient power, poor infrared effect and continuous reboot etc.



2. Don't pick up the cable by hand, it may cause connection problem with cable.



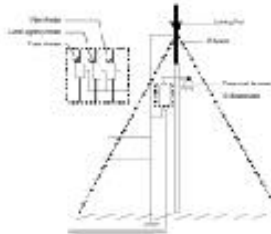
3. For safety and correct installation, please refer to Fig 1 and Fig 2.



4. To make sure the product work properly, don't rotate pan and tilt parts by force, to avoid rotating parts displaced or motor damaged.



5. During the installation, please make sure the products is installed properly with waterproof protection on the bracket and cable.



6. Please ensure lightning protection based on industrial standard to avoid any damaged on the products

2. Installation Guide

2.1 Equipment Connection

The whole system of HD-IP cameras as shown in Fig 2.0, default IP address is DHCP, System default sub-net mask is 255.255.255.0, User name is admin, Password: admin.

(For ensuring the correct IP address, please use searching tool--SearchTool to Search Device>Add Device).

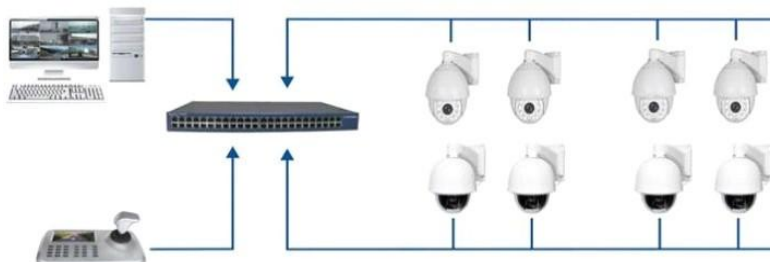


Figure 2.0

2.2 Installation of Browser Plug-in

After all devices connection and network setting done, user can access to the Web login interface by enter device IP address in browser address bar, while Plug-in is required to install for first visiting. If the PC has installed same version Plug-in, directly enter the login interface, shown as below Fig 2.1.

For first login, please click to download and install the plug-in. The user will get the plug-in installation of LsModulePlugin, then download and click the [Run] button to install, after the installation is completed, close the IE and reopen it, enter the IP address to login.

[Please click here to download and install the plugin](#)

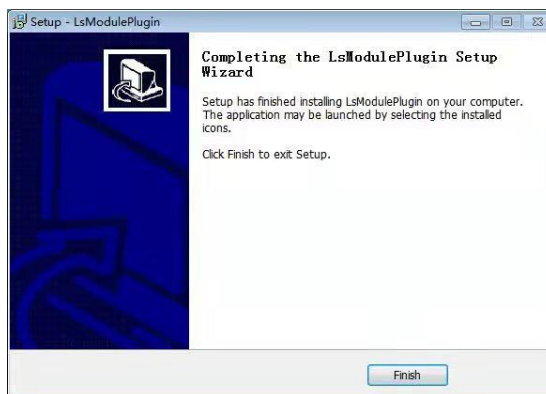


Figure 2.1

After the installation is completed, reopen IE and enter the device IP address, then the login page will appear. The default user name is admin, and the password is admin.

After clicking login, the prompt as shown in Figure 2.2, and then clicking "Modify after 60 minutes" will display the video interface as shown in Figure 2.3.

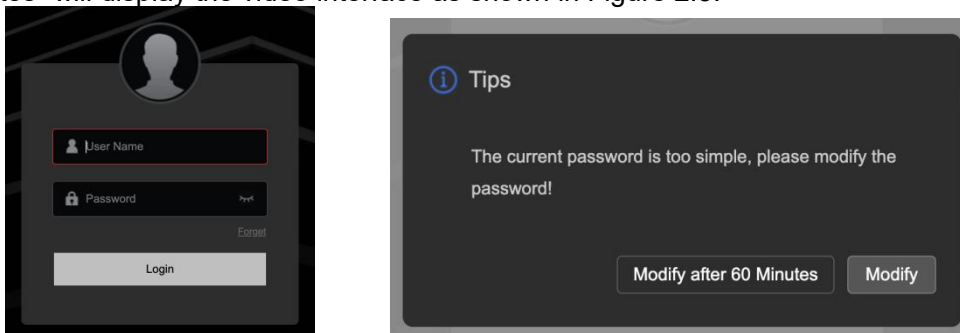


Figure 2.2

2.3 Browser Basic Function Instruction

Enter the IP address in the IE address bar, and preview the device after logging in

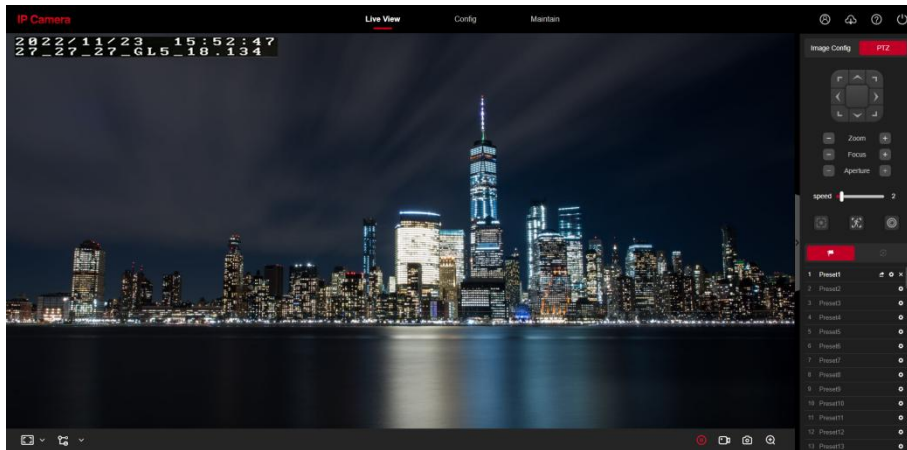


Figure 2.3

Browser Icon Function Keys are shown in Figure 2.4.

	Stop		Enlarge
	Play		Open Talkback
	Start Recording		PTZ
	Screen Shot		Turn on/Sound Off
	Humanoid Tracking		One Key Focus
	Preset		Cruise Route

Figure 2.4

2.3.1. Modify of IP Address

a. Modify the IP by Browser

Enter the IE browser and click "Configuration"->"Local Network"->"Basic Configuration"->"Device IPV4 Address". Enter the corresponding IP address, and then click "Save";

b. Modify the IP by Tool

Open “” tool to show as Figure 2.5, select “IPC” then click “Refresh” to search the device IP address--Select the IP address that needs to be modified--then input the default password: admin to complete the modification;

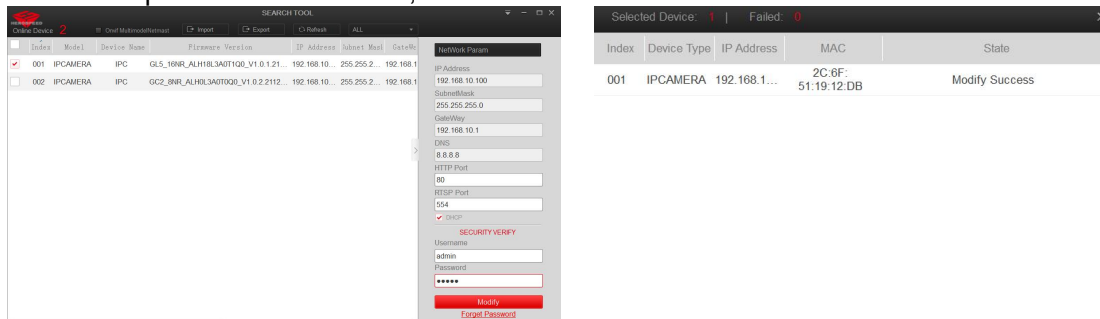


Figure 2.5

2.4 Tour, 360, A-B Scan Operation

Tour, 360, A-B Scan and other functions are realized by calling the preset, such as calling the preset 98 to start the “Tour”; whether it is NVR or WEB end, the user only needs to be on the control end find the corresponding preset function, refer to the following Shortcut Commands to

complete the operation.

Shortcut Commands:

Call Preset	Function	Call Preset	Function
33	Pan 180°	85	Force on near light light
34	Reset	92	A-B scan
35	Wiper on	94	OSD off
36	Wiper off	95	OSD on
81	Auto day/night	96	Guard tour 3
82	Switch to night	97	Guard tour 2
83	Switch to day	98(38)	Guard tour 1
84	Force on far light	99(39)	Pan scan

Note: By default, A-B scan preset for point A is the preset "1", and point B is the preset "2". Calling preset 92 can realize the A-B scan.

2.5 Mobile App Operation

2.5.1 Mobile App Installation

Android/iPhone Users: Please download the App "Bitvision" by Google Play, App Store or scan the QR code to install.



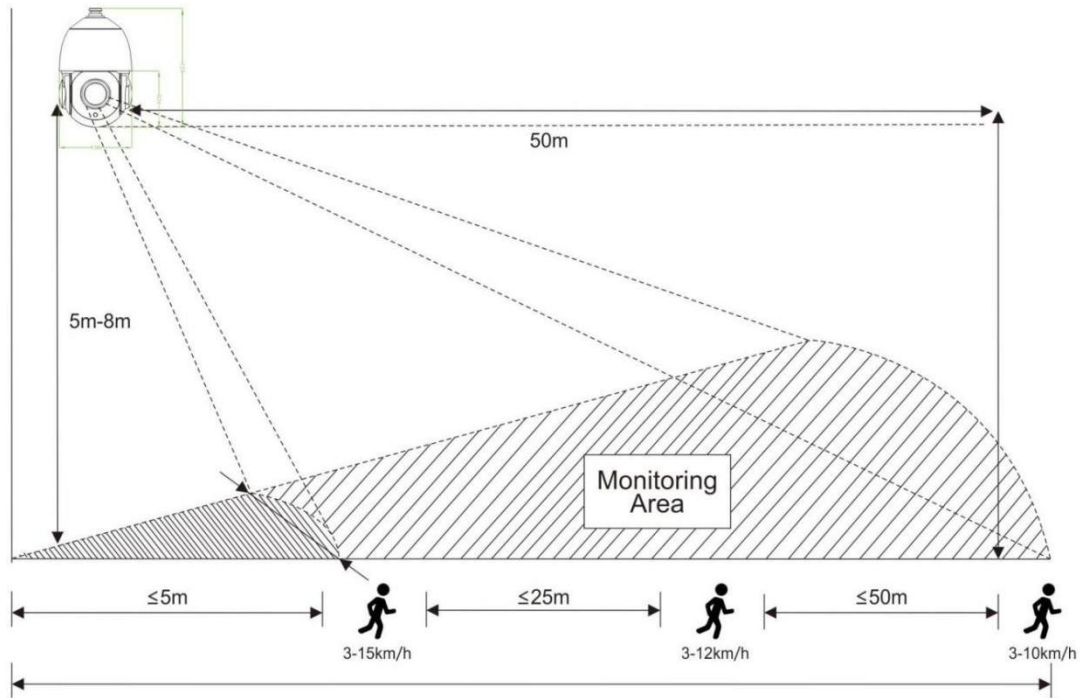
Bitvision

3. Setting for Humanoid Tracking

3.1 Scene Installation Diagram

Equipment Installation Instructions

- 1 Please refer to the following diagram to adjust the proper installation angle.
- 2 3D humanoid auto-tracking camera can realize alarm APP push, audio custom alarm output
- 3 When multiple targets appear at the same time, the system will prioritize tracking relatively large targets.
- 4 The 3D humanoid auto-tracking camera is suitable for border defense, reservoirs, forests, farms and other low-density scenes, which can give full play to product advantages. Large amount of people, such as train stations, squares, not suitable for using auto-tracking camera.



Remark:

1. 20X camera, the target $\leq 2m$ or target $\geq 50m$, and the tracking effect will be affected.
2. Fixed lens camera, target distance $\geq 15m$, the tracking effect will be affected.

3.2 3D Humanoid Tracking Operation

(Note: some dome models do not support this function, please consult sales staff for more details.)

3.2.1 How to Turn on Humanoid Tracking at Fixed Area

Rotate the camera to the designated important monitoring area, call the preset 40, or click the "👤" to start the humanoid tracking in the current area; if the target is lost, it will return to the designated monitoring area in 3 seconds;

3.2.2 The Way to Turn Off Humanoid Tracking

The camera turns off the humanoid tracking by calling preset 41, or click the "👤", the humanoid tracking function can be turned off.

4. Trouble Shooting

No	Issue	Possible Reason	Solution
1	Remote access is not available	<ol style="list-style-type: none"> 1. Camera fails to connect with Extra-net. 2. Camera and Switch not in same segment. 	<ol style="list-style-type: none"> 1. Check the network, ensure camera connect well with Extra-net. 2. Set the camera and switch in same segment.
2	Night vision is not good, camera restart constantly	<ol style="list-style-type: none"> 1. Power cable is extended or power supply is damaged cause low voltage. 	<ol style="list-style-type: none"> 1.The extension should be within 5M, or change a new power supply.
3	Unable to control the camera	<ol style="list-style-type: none"> 1.Lower power, and camera restart constantly. 2.Wrong communication settings. 	<ol style="list-style-type: none"> 1.Change the power supply. 2. Restore the default setting in the browser.

4	Unable to run the tour	1.NVR can't support preset commands over 64 digit. 2.NVR is unable to call the preset before setting it up.	1.Refer to 2.4 shortcut commands list, start with 3X to replace. 2.Set up preset point first then call it.
5	No image after connecting with NVR	1. NVR or PC Client can't support H.265 decoding.	1.Change a NVR which supports H.265 or change camera to H.264.