

Camera

Quick Installation Guide

Please read the Quick Start Guide carefully before using the product and keep it.



Notice

- The wall should be of a certain thickness and can withstand at least 4 times the total weight of the camera and mounting accessories.
- This series of network cameras is limited to installation in an indoor environment. Do not install or use it in an outdoor environment.
- If it is a cement wall, first install the expansion screw. The installation position of the expansion screw should be the same as that on the standard rail.
- When the cylindrical lens is installed with holes, you need to use the tool to open the mounting hole on the wall according to the size of the cylindrical lens, and then install it.

1. Packing List

Accessory name	Model		
	LMEMPSS L2008	LMEMPSS L2008	LMEMTCS L2008
Main unit	1	1	1
main unit bracket	1	1	1
Mounting rail	1	1	1
Block pinhole lens	1	/	/
Cylindrical pinhole lens	/	1	/
Cylindrical plate lens	/	/	1
Lens mount 1	/	1	1
Lens mount 2	/	1	1
Bracket ring	/	1	1
Screw package	3	3	3
Camera Quick Installation Guide	1	1	1
Camera Quick Start Guide	1	1	1



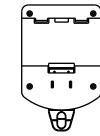
Notice

When attaching the lens, select lens mount 1 or lens mount 2 according to your environment.

2. Products And Brackets



Main unit



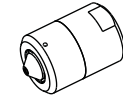
Main unit bracket



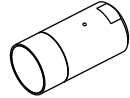
Mounting rail



Block pinhole lens



Cylindrical pinhole lens



Cylindrical plate lens



Lens mount1

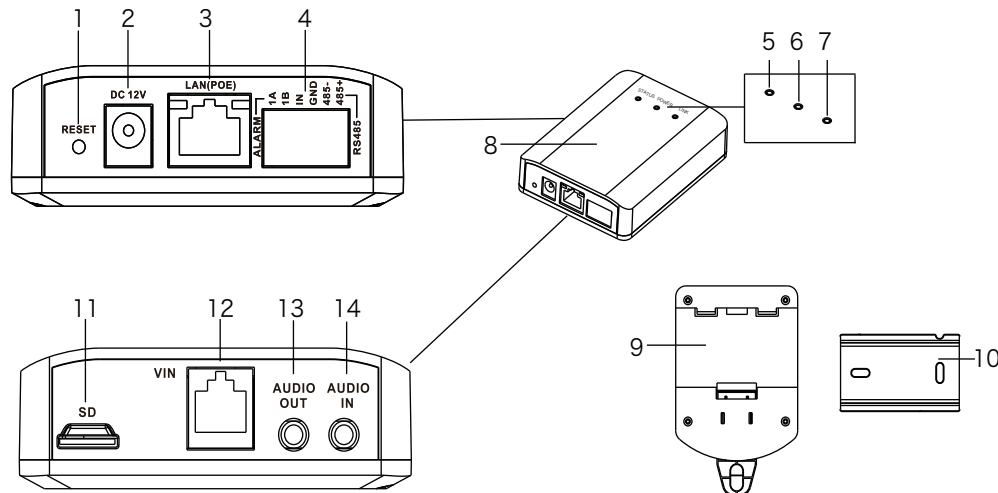


Lens mount 2



Bracket ring

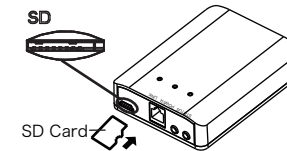
3. Main Unit Interface



The main unit interface is described as follows:

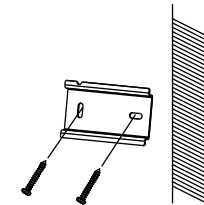
NO.	Name
1	RESET: One-button reset Press and hold the "RESET" button, power on the camera, press and hold the "RESET" button for 10 seconds, and all the parameters of the camera will be restored to the factory settings.
2	DC 12V: Power input interface
3	LAN(PoE): Ethernet interface with PoE function
4	RS-485 and Alarm input and output interfaces
5	STATUS: Status indicator LED
6	POWER: Power indicator LED
7	LINK: Internet indicator LED
8	Main unit
9	Main unit bracket
10	Mounting rail
11	SD: MicroSD card slot
12	VIN: Video module input
13	AUDIO OUT: Audio output
14	AUDIO IN: Audio input

4. Installing The Main Unit



SD Card

(1) Gently insert the SD card into the card slot in the direction of the arrow on the left.
To take out the SD card, gently press the SD card inward and the SD card will pop up gently.



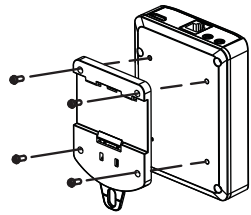
(2) Secure the mounting rail onto the installation surface with screws.

Note:

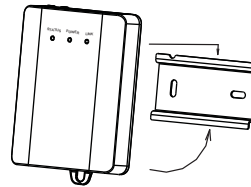
This part of the installation instructions is suitable for the case where the host needs to be fixed. If it is not necessary to fix it, just place the host horizontally on the table.

5. Installing The Lens

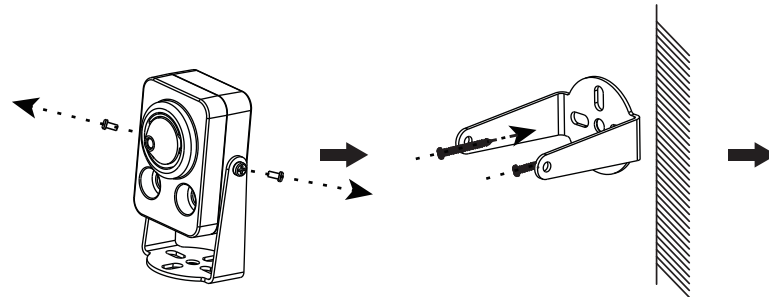
5.1 Installing The Block Pinhole Lens Unit



(3) Fix the main bracket to the rear case of the main unit with screws.

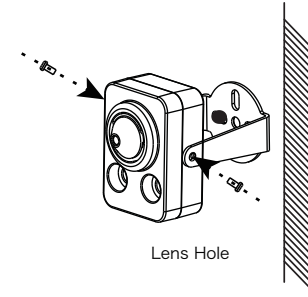


(4) Install the host: Hang the hook on the upper side of the back of the main unit on the slide rail, press the main unit down slightly, and pull the handle to make the back elastic buckle snap into place. Or slide the main unit from the side of the slide rail into the slide rail to fully align the bracket with the slide rail.

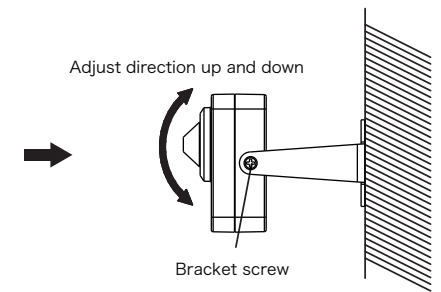


(1) Loosen the 2 screws and remove the U-shaped bracket.

(2) Fix the bracket to the wall with screws.



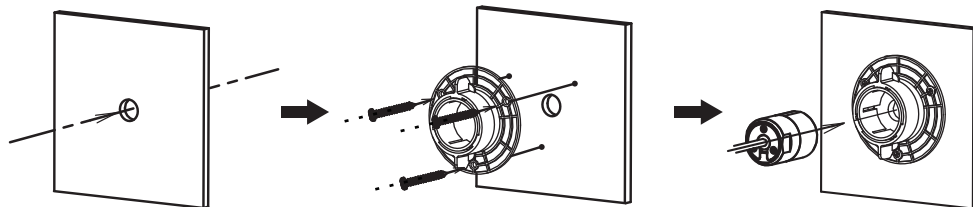
(3) Mount the lens to the bracket with screws.



(4) Connect the cable of the lens, adjust the angle of the lens by comparing the image on the monitor, and lock the screws at both ends of the bracket to complete the installation.

5.2 Installing The Cylindrical Lens Unit

◆ Concealed Installation Inside

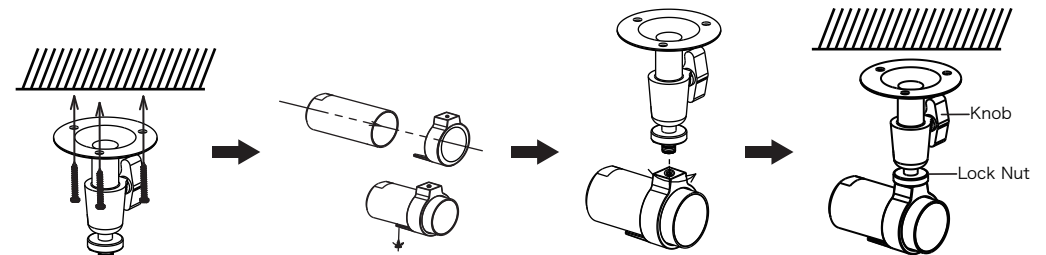


(1) Open a hole with a 3mm in the wall (for cylindrical plate lens, open a 26mm hole in the wall).

(2) Remove a side of the adhesive tape on the bracket, and paste the bracket on the wall with aligning with the drilling hole. Or use screws to secure the bracket to the wall.

(3) Install the cylindrical lens into the mounting hole in the round rail bracket, and turn the locking sleeve to fix the lens. Make sure that the "➡" mark on the lens is directly above.

◆ Ceiling Installation Outside



(1) Fix the lens mount 2 to the wall with screws.

(2) Insert the pen-shaped lens into the bracket ring and lock it with the screw to ensure that the "➡" mark on the lens is directly above.

(3) Align the lens threaded port with the lens mount 2 thread and turn it clockwise to secure it to the bracket.

(4) Connect the lens cable, compare the image on the monitor to adjust the angle of the lens, and lock the nut and the knob to complete the installation.