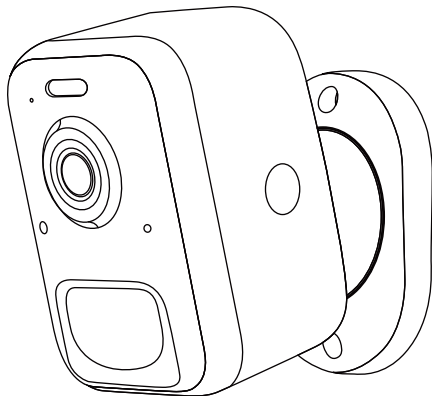


LongPlus

Quick Start Guide



Please read the Quick Start Guide carefully before using the product and keep it.
Related tools and documents of product, please download from www.herospeed.net

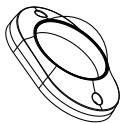
1. WHAT'S IN THE BOX



Battery Camera



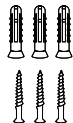
USB Cable



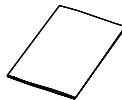
Mount Bracket



Adhesive Tape

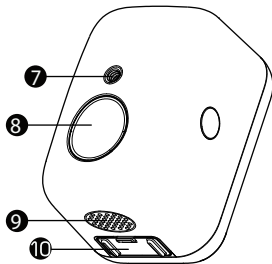
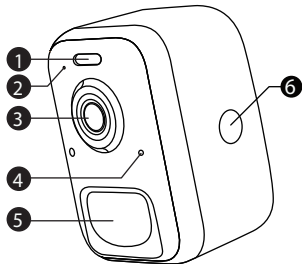


Screw Set

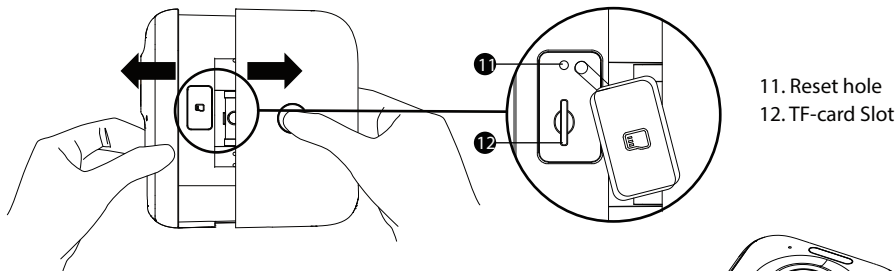


User Guide

2. CAMERA DIAGRAM



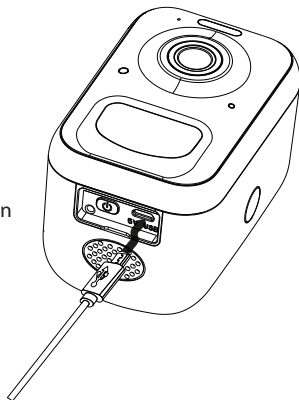
1. LED Light
2. Microphone
3. 4MP Camera
4. LED Indicator
5. PIR Motion Sensor
6. Back Shell Open Button
7. Threaded Bracket Interface
8. Strong Magnetic Chuck
9. Speaker
10. Power button & Micro USB Port



3. BATTERY CHARGING

The batteries inside the Battery camera not fully charged in accordance with transportation safety regulations. Please charge the batteries with a USB Cable (5V adapter not included), and fully charged for 8-10 hours before installation

LED Indicator	Description
Solid Blue	Working
None	Sleep/Power Off
Solid Yellow	Charging
Solid Green	Charging Finished



4. DOWNLOAD THE APP

Download and install the 'LongPlus' app from Google PlayTM or the App StoreTM. The App is also available by scanning the QR codes on the right, using your QR code scanner in your smart phone.

NOTE:

Google PlayTM is a trademark of Google Inc.

App StoreTM is a service mark of Apple Inc.



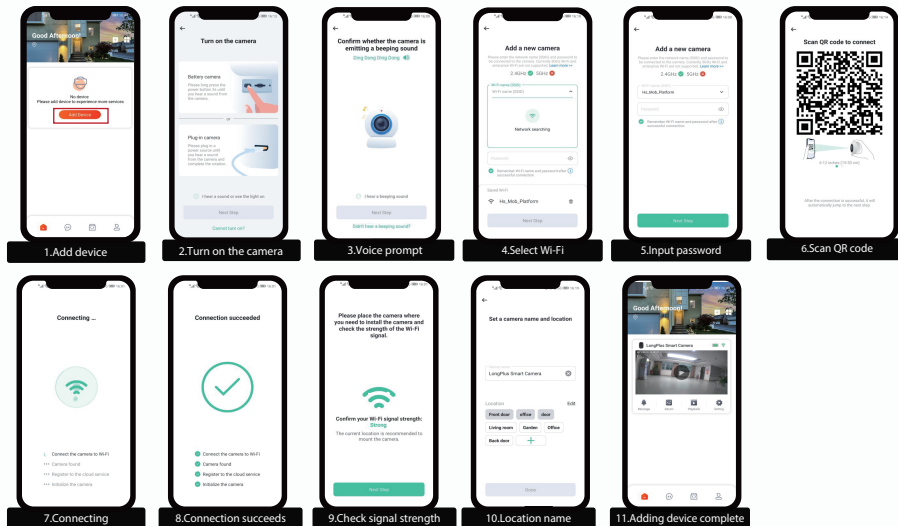
5. WI-FI SET UP

Before you start the Wi-Fi configuration, please note below:

- 1). The Battery camera works with 2.4 GHz Wi-Fi, but not with 5 GHz Wi-Fi.
- 2). Avoid using special characters or symbols like (@~!#\$%^&*..., in your Wi- Fi name or password.
- 3). Perform the configuration near your Wi-Fi router.

Launch the “LongPlus” APP and register an account with your mobile phone number or email ID. Start the Wi-Fi configuration, following the in-App instructions or referring to the following guiding steps.

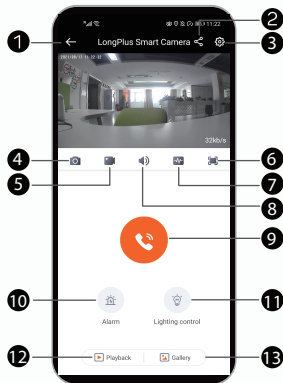
Guiding STEPS:



6. RUN A TEST

After setup, tap on the live view window in the app for a test. Then take your Battery camera outside to the installation spot and run a test there. Make sure the installation spot is covered by strong 2.4 GHz Wi-Fi signal. If the battery camera doesn't work well outside, you may need to move the router closer to the installation spot or invest in a Wi-Fi extender.

7.LIVE VIEW INTERFACE



① Return Home page	⑧ Speak
② Sharing	⑨ Call
③ Settings	⑩ Alarm
④ Screenshot	⑪ Light control
⑤ Video	⑫ Playback
⑥ Fullscreen	⑬ Gallery
⑦ SD/HD	

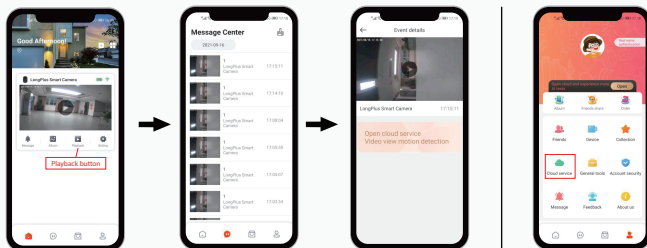


1 Screenshot	3 Speak
2 Video	4 Call
5 Quit Live View	

NOTE: Live viewing will not trigger device recording.

8. PLAYBACK

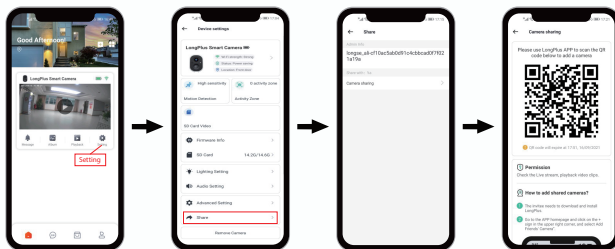
If the Micro-SD card is properly installed, you can playback the video clips taken after motion detection. A 7-days-rolling free cloud storage service is ready for your camera. You can also upgrade your cloud service pack in the settings.



Tap to upgrade your cloud recording service pack and enable Smart Ai Motion Detection area customization.

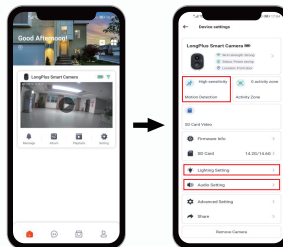
9. SHARE YOUR DEVICE

Steps: Run LongPlus App >> Home >> Setting >> Share >> Camera sharing >> Let the administrator scan your QR Code.

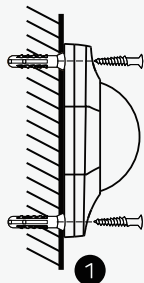


10. ALARM SETTING

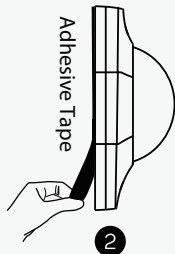
When a motion is detected by your camera, you will receive alarm notification from the App. You can also enable flashlight alarm and siren alarm to be triggered after motion events. The flashlight alarm and siren alarm can also be triggered manually in the camera settings.



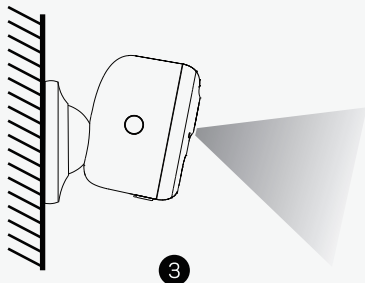
11. INSTALLATION



Nail the screw to the anchors, or directly to the wall until the bracket is fixed to the wall.



You can also use the provided double-sided tape instead of screws to fix the wall mount on flat surface



Attach the camera to the bracket and adjust the angle to cover the surveillance area. Do make sure the camera is within the Wi-Fi range.

NOTE:

! LongPlus App will remind you to charge your camera when the battery is low. Please charge the camera with the provided Micro USB cable and a DC 5V 1.5A phone charger. During charging, the camera's LED indicator is in solid yellow, and when the camera is fully charged, the indicator will turn into solid green. It takes about 8-10 hours to fully charge your camera.

- ❗ When you connect your camera through the LongPlus App, it will prompt you if the latest firmware is available. You can also manually check the firmware upgrade in the settings of the App.
- ❗ Please make sure your camera is fully charged or connected to a power source to upgrade the firmware. Do not cut off the power when upgrading the firmware.

12. TECHNICAL PARAMETERS

Video & Audio	
Image Sensor	1/3" CMOS (4.0MP)
Resolution	Ingenic T31ZX
Image Sensor	2560 × 1440 px
Stream	HD/SD dual stream
Infrared LED	High power IR LED with ICR
Lense	2.8mm/F2.0
Angle of view	110°
Miu.illumin.	Color:0.01 Lux;B&W:0.01LUX
Audio	2-way audio with noise cancellation
Storage	
Storage Type	Micro SD Card(Max 128G)
Cloud storage	Support
Recording	Triggered by PIR motion sensor

Network	
Wi-Fi Frequency	2.4 GHz ~ 2.4835 GHz
Standards	IEEE 802.11 b/g/n
Live View Speed	Within 3 ~ 4 Sec
Software	
App Name	VicoHome
System	iOS, Android
Remote View	Within 2 ~ 4 sec
Notification	Push notification within 2 ~ 4 sec
General	
Standby Current	300μA
Working Current(day)	250mA
Working Current(Night)	510mA
Battery life(full charge)	2~3 Months

General	
Battery Charging	DC5V 1A~2A (Micro USB Port)
Firmware Upgrade	OTA(Over-the-Air)
Dimension(mm)	72.1mm × 63.3mm × 97.4mm
Weight (KG)	0.35 KG
Working Temp. & Humidity	-20℃~50℃; <90%(No condensation)
Power Source	Lithium 21700 Battery (3.7V, 4800mAh) × 2
Bracket Data	
Weight (KG)	0.08 KG
Dimension (mm)	86mm × 56mm × 28mm

FAQ

Q1: How to invite family and friends to use my camera together?

A1: Please refer to the guiding steps on page 7 of this user guide.

Q2: Why doesn't the Wi-Fi name appear when I connect to Wi-Fi?

A2: On Apple devices with iOS13 and above, you need to turn on the "location permission" for the app in the system settings and change it to "allow when using."

Q3: Will the camera show red lights when night vision is activated?

A3: The built-in infrared lamp beads make the camera only show some dim red lights when night vision is activated, but the image quality is still clear under no light environment.

Q4: What are the requirements for Wi-Fi?

A4: Please use a 2.4GHz wireless network. The device does not support the 5GHz wireless network. Meanwhile, please set the Wi-Fi authentication method to wpa2-psk or other lower level of security method. A password is required.

Q5: How far should the camera be placed from the router?

A5: After testing, the Wi-Fi connection distance can normally reach up to 150 meters in the open area. However, the actual situation depends on the strength of Wi-Fi and its surrounding environment

Q6: What is the maximum length of recording time?

A6: You can choose the recording time in the app. The camera can record for a fixed time or "auto" mode, which depending on whether there is a person. The maximum length of a video is 3 minutes.

Q7: How to quickly view videos by category?

7A: Click the icon in the upper left corner of the "Library" page to start the search filters. Select the search settings and then click save to view the video playback.

Q8: What should I do when the device is in malfunction?

A8: Long press the power button to restart the camera. If there is no response, you can open the back shell of the camera, and then open the rubber plug on the side then press the reset button with a pointed object to force the power off, then long press the power button to restart the camera.