

A large red circle is centered on the page, serving as a background for the title text.

PoE NVR Kits

Quick Start Guide

Please read the Quick Start Guide carefully before using the product and keep it.
Related tools and documents of products, please download from www.herospeed.net.

Statement

Thank you for purchasing our products, if you have any questions or requires, please contact us. This manual is used for PoE NVR and PoE cameras in the kit. It will be updated subject to product's updating; new version will be not noticed specifically.

If this manual's any products description not accord with the real products, please in kind prevail.

Safety Precautions

1. Please modify default password promptly after the equipment is installed, to avoid being stolen.
2. Please do not place and install the equipment in direct sunlight or near heating equipment.
3. Please do not install the equipment in wet, dusty or soot-burning places.
4. Please keep the NVR level installed, or install it in a stable place, and take care to prevent the product from falling.
5. Do not drop or splash liquid onto the NVR and ensure that no liquid-filled items are placed on the device to prevent liquid from flowing into the device.
6. Please install the equipment in a well-ventilated place and do not block the vents of the equipment.
7. Please use the equipment within rated input/output range only.
8. Please do not disassemble the equipment without notifying supplier.
9. Please transport, use and reserve the equipment in permissible range of humidity and temperature.

Disclaimer

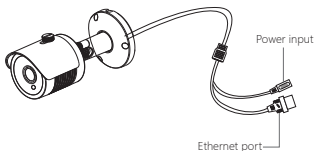
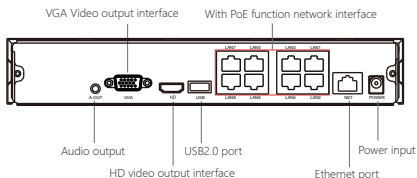
Please pay special attention to the following exclusions or restrictions:

1. If the product is terminated for any of the following reasons, our company shall not be liable for any personal injury or property damage to you or third parties:
 - A. The installation or use of equipment is not strictly in accordance with the requirements;
 - B. State or public interest;
 - C. Majeure;
 - D. Your own or third-party reasons, including but not limited to the use of third-party products, software, components and so on.
2. Our company does not guarantee the equipment for special purposes or use in any express or implied way. This equipment shall not be used for medical/safety equipment or other products which can cause life hazards and personal injury applications or dangerous uses of weapons of mass destruction, biological and chemical weapons, nuclear explosion and any unsafe use of nuclear energy or contrary to humanitarian purposes. Any loss or liability arising from such use shall be borne by yourself.
3. This equipment can perceive specific illegal invasion in correct installation and use, but it can not avoid accidents or personal injury and property loss caused by this. In daily life, please be vigilant and strengthen the awareness of safety precautions.
4. We are not liable for any consequential, accidental, special or punitive damages, requests, property losses, data losses and documents losses. In the maximum extent permitted by law, our liability for compensation shall not exceed the amount paid by you when purchasing this product.

Products Appearance Description

NVR Ports: HD port, VGA video output port, Audio output port, Ethernet port, USB port, PoE LAN port, Power Input port.

IP camera Ports: Ethernet Port, Power input port.



Notes: Images for instruction use only, the final goods are subjected to the real object.

PoE NVR Kits Quick Installation Guide

This PoE NVR Kits can be easily installed, no need cable, plug and play and no need any set up.

PoE IP cameras can be powered on by network cable, which can eliminate layout of cable and Socket.

The camera is not limited by power supply.

1. Install HDD.

Make sure all power are cut before installing. Installation tool: Cross screwdriver.

Notes: Please use the professional hard disk recommended by supplier.

(1) Unscrew the screws on the back and sides of the chassis and remove the cover.

(2) Connect one end of the hard disk power cable and data cable to the motherboard and the other end to the hard disk.



(3) Align the hard disk screw holes to the chassis backplane, and then tighten lock the screws.

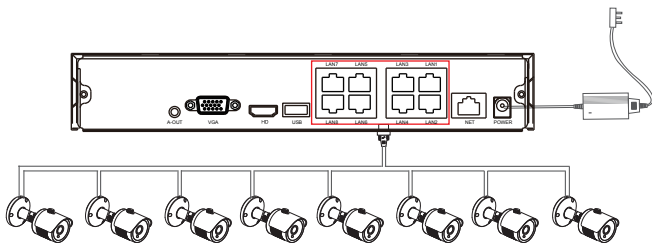
(4) Install the cover and fix it by screws.



Step2: Device connection

Power on the PoE NVR and connect it to Network. After connecting IP cameras with the POE port of NVR through network cable, the kit can work normally.

Note: NVR default IP address is <http://192.168.1.88>.

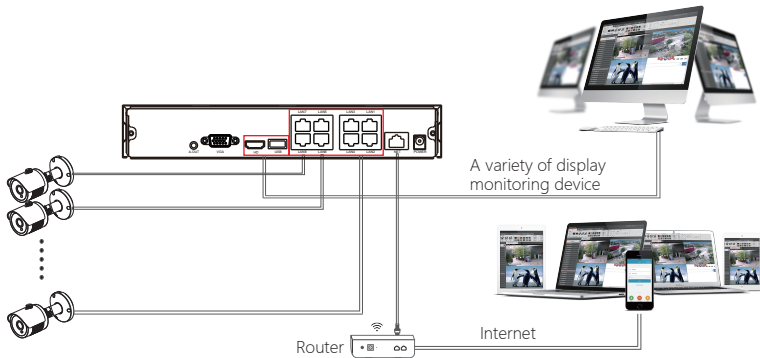


Notes: Images for instruction use only, the final goods are subjected to the real object.

※ Attention Please When Installation: The IPC camera provides the network and power through the POE network interface that accesses to the NVR

To confirm the PoE package is working properly: NVR connected to the display, IPC connect to NVR through the network cable, NVR plug in the power, when the NVR monitor display shows IPC video, indicating that the device is working properly without any operation. The device has been configured successfully before shipment.

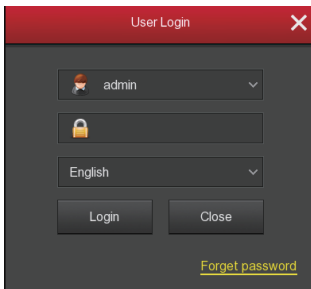
Attention: Configure output voltage of the power adapter is 48V, please ensure the power supply voltage is between 100V ~ 240V, otherwise it will seriously damage POE package equipment.



System login

Start up the NVR, right click the desktop and enter the user login interface.

Input the user name and password. System default user name : "admin" Password : "12345".



Preview

Enter preview interface after device start up. Preview interface include date and time of system, and channel name. Login system, double left click to switch between full screen and multi-screen.

Menu basic operating instructions

1. Enter the menu mode

Login system, right click to popup shortcut menu.

Left click **【Menu】** , enter the main menu interface.

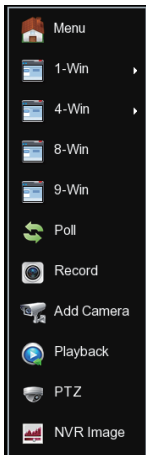
Left click **【Playback】** , enter playback operation interface.

Left click **【Record】** , enter record setting operation interface.

2. Exit the menu mode

Right click to exit the menu mode.

In the menu mode, right click to return to the previous menu (also for other menus).



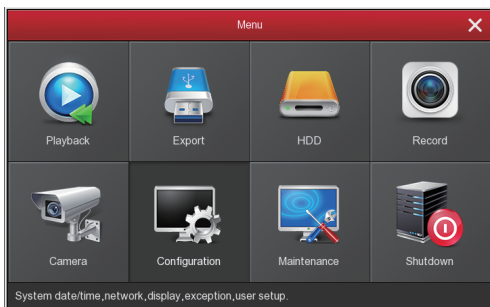
Shortcut menu introduction

Right click to popup shortcut menu, the menu consists with the following three parts:

Preview mode: Select the preview mode in the menu bar you like.

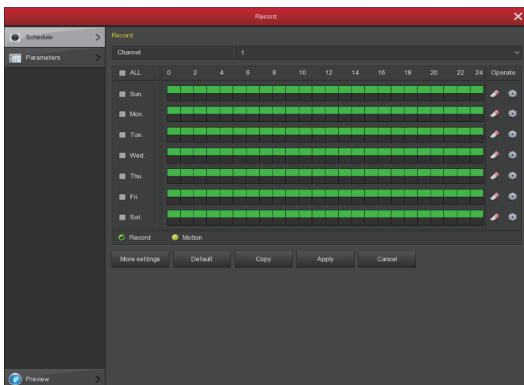
Shortcut menu mode: There are Poll,Record, Add Camera, NVR image, you can click and the enter corresponding menu directly.

Main menu:It contains 【Playback】 , 【Export】 , 【HDD】 , 【Record】 , 【Camera】 , 【Configuration】 , 【Maintenance】 , 【Shutdown】 eight parts.

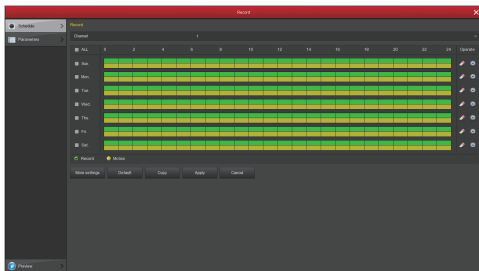


Record

1. HDD formatting. Make sure the hard disk is detected and works well. (You can check status of HDD from menu "HDD")
 2. Enter "Record" interface to set recording from shortcut menu "Record" or main menu "Record".
- Default setting is all channels are recorded 24 hours a day.

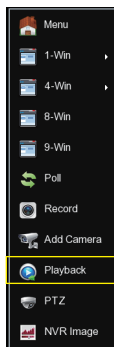


3. Motion Detection Setting, enable "Motion" to activate motion recording, motion sections have no more than 6 time periods each day. If normal record and motion record are overlapped, it can only save the motion records while motion detection comes up.

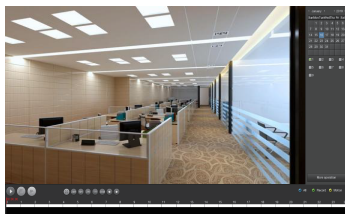
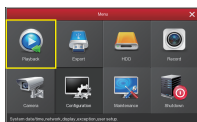


Playback

Enter "Playback" interface by clicking "Playback" from shortcut or main menu, select channels and search the record files and playback what you want.

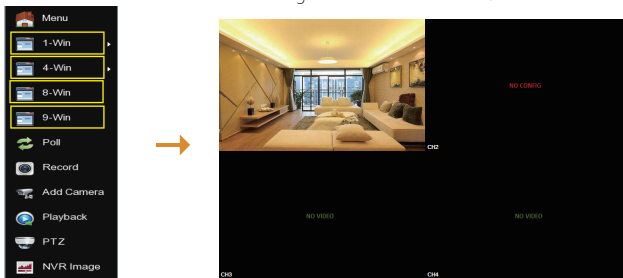


or

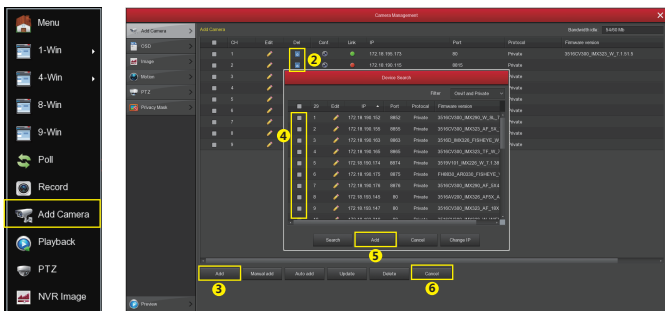


Live View

1. Left click **【1-Win】 / 【4-Win】 / 【8-Win】 / 【9-Win】** in the menu, and enter real time view interface, and you can view one or more camera monitoring screens at the same time.



2. PoE NVR kits default match cameras device, connect all IPCs to NVR, connect the NVR to the monitor, and power it on, then can real time preview. If you change the cameras default IP address, need to add again the devices to the NVR.



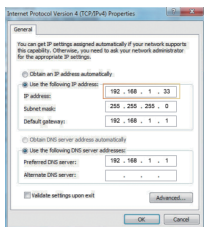
As picture above, left click to enter Add Camera interface with the shortcut menu, or choose "Camera" in the Menu-"Add Camera"

- ① Connect the NVR to the power supply, and the IPC connects to the PoE network interface of the NVR through the network cable without any additional power supply.
- ② If you have added the device, first deleted the device has been added.
- ③ Click on the menu button "Add" to enter the Device Search interface, the interface automatically search the device and display the device to search.
- ④ Check the device you want to add;
- ⑤ Click "Add";
- ⑥ Click "Cancel" to return to the previous interface.

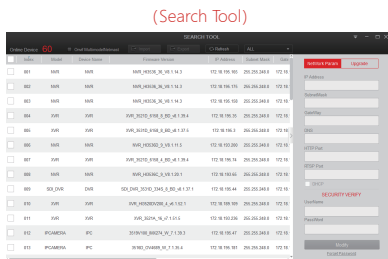
Webpage NVR Login

1. Login NVR LAN(Same router in same computer, also named intranet)

- ① Make sure the recorder and the connected PC(computer) are in the same segment. If not, please set IP address of your PC the same segment as the NVR's, for example '192.168.1.33', but it must be different IP as the NVR's. (Note: NVR default IP address is 192.168.1.88).
- ② Open IE browser, Select Tools > Internet Options > Safety > customized.
- ③ Open "Search Tool", double-click the target device from the search result to enter the login interface, or open the IE browser to enter the NVR address: such as http://192.168.1.88/ (If the port 80 of the NVR is changed to other, you need to add the changed port) to enter the login interface.
- ④ On login interface, login NVR please (Notes: Default user: "admin",password: "12345").
- ⑤ Webpage live view for NVR. On "Live Video" interface, click "Play" icon to play video.



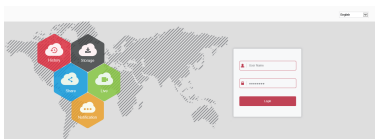
①



(Search Tool)

③

(First connect need download and install plugin)



④



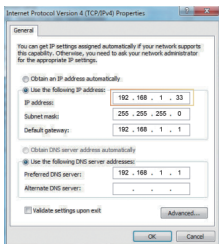
⑤-1



⑤-2

2. IPC LAN Login (the PC and the device are in the same router)

- ① Connect Lan port with network cable between your PC and IPC. Make sure the devices and the connected PC are in the same segment. If your PC has different segment, please set IP address of your PC the same segment as the device's, for example "192.168.1.104", but it must be different IP as the NVR's and IPC's. (Default IP address of IPC is 192.168.1.100-103)
- ② Open IE browser, Select Tools > Internet Options > Safety > customized.
- ③ Open "Search Tool", double-click the target device from the search result to enter the login interface, or open the IE browser to enter the IPC address: such as http://192.168.1.100/ (If the port 80 of the IPC is changed to other, you need to add the changed port) to enter the login interface, IPC address can be viewed in the NVR "Add Device".
- ④ On login interface, login IPC please. (Notes: Default user: "admin", password: "admin".)
- ⑤ Webpage live view for IPC.



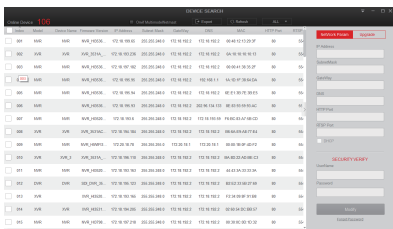
①

(First connect need download and install plugin)

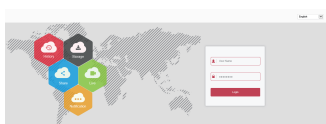


④-1

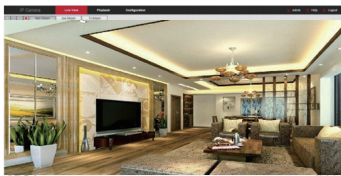
(Search Tool)



③



④-2



⑤

Mobile App Access

Download and install BitVision on smart phone by following way:

1. In the Android phone App Store or iPhone App Store enter "BitVision" search, download and install.
2. Scan the following QR codes to download and install the App.



Android



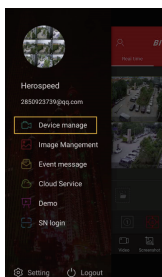
ios

3. Download from the following websites:

Android App: <https://play.google.com/store/apps/details?id=com.gzch.lspat.bitdog>

iOS App: <https://itunes.apple.com/app/id1419463554>

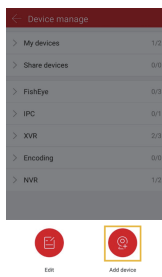
Open BitVision App(New user please register an account), follow up next steps to add the devices.



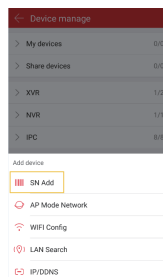
①



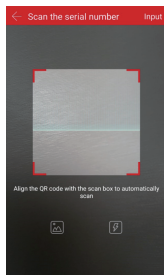
②



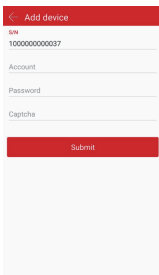
③



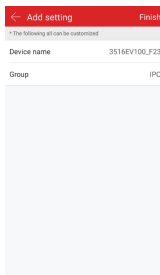
④



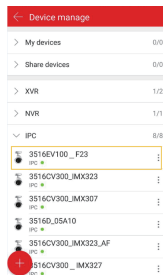
⑤



⑥



⑦



⑧

① Click **【Device manage】** in the menu bar;

② Click **【+】** ;

③ Click **【Add device】** ;

④ Click **【SN Add】** ;

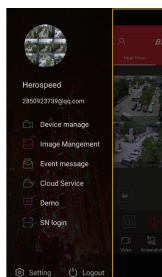
⑤ Scan the QR Code printed on the device sticker or posted on the P2P interface;

⑥ Enter device user name, password and Captcha (printed on the label), click **【Submit】** ;

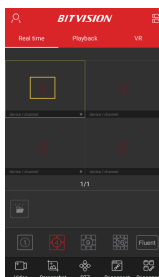
⑦ Click **【Please set the device name】** , enter the device name, click **【Done】** ; Click **【Please choose a group】** , choose camera group, click **【Done】** , click **【Finish】** .

⑧ The device was successfully added to the device list.

The steps to preview the video are as follows:



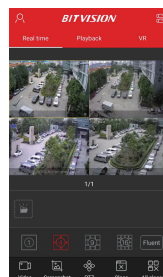
①



②



③



④

① Click on the right part of the sliding menu to enter the main interface;

② Click **【Real time】** , click **【+】** to enter the "Device manage" interface.

③ Choose the device channel you want to preview, click **【Done】** .

④ Start to play the real-time video.