

# IP Camera

## Quick Start Guide

Please read this manual carefully and keep it properly before using our network camera products.

Related tools and documents of products, please download from <http://www.herospeed.net>.

## Statement

- This manual is applicable to network series products.
- This manual may contain information that is technically inaccurate, inconsistent in the product's function and operation, or in a typographical error. Our company will update the context in the manual according to the enhancement of product features. Updated content will be added in the new version of this manual without further notice.
- If there is manual description of the product does not match with the physical, in order to prevail in kind.

## Safety Precautions

- Please avoid installing the product in a vibration or shock environment, and keep the product away from electromagnetic interference (ignoring this may damage the product).
- In order to avoid heat accumulation, please keep good ventilation around the device, and do not block the vent of the device.
- Do not install indoor products in an environment that may be exposed to water or other liquids.
- Do not use the product in extremely hot, cold, dusty, or high humidity environments.
- This equipment must be stored in a dry and non-corrosive gas environment, and avoid direct sunlight.
- Please avoid pointing the lens at strong light (such as lighting, sunlight or laser beam, etc.), otherwise it will damage the sensor.

- Power must be under safety certification, Its output voltage, current, voltage polarity and operating temperature must comply with the power requirements of this equipment.
- When using this equipment in thunder and lightning conditions, please pay attention to install lightning protection device or cut off the power.
- In order to get high quality video and pictures, make sure your internet connection is stable and smooth.
- When the device is connected to the Internet, it may face network security issues. Please strengthen the protection of personal information and data security.
- Please understand that you are responsible for properly configuring all passwords and other related product security settings, and keeping your user name and password properly.


# 1. Network Setting

The default IP of all cameras is 192.168.1.168. The IPv4 address of the computer must be in the same network segment as the IP address of the IP camera. To enable the camera to access the network smoothly, plan the available IP network segments based on the actual network environment.

## Prepare the network configuration:

(1) Add the same network segment IP as 192.168.1.168 (camera factory default IP) in the computer, such as 192.168.1.165.

## Steps to add an IP address to the Windows system:

Step 1: Click [  ]Start → [Control Panel] → [Network and Sharing Center] → [Local Network] → [Properties] → [Internet Protocol Version 4 (TCP/IPv4)] → [Advanced] to enter the advanced TCP/IP setting interface.

Step 2: Click [Add] in the IP address (R) position, enter the IP address as 192.168.1.165 and the subnet mask 255.255.255.0, and click [Add] → [OK] → [OK] → [OK].

(2) Connect camera and PC by network cable in the same LAN, power on. Connecting as following (PoE switch, camera, PC connection photo).



The network configuration steps are as follows:

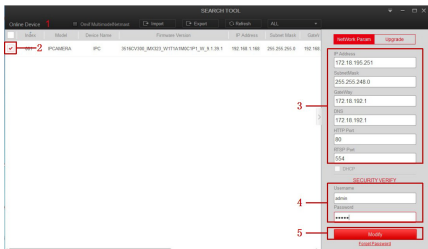
Step 1: Open [  Search Tool] (Version 7.2.45.6 and above, please install Search Tool from <http://www.herospeed.net>).

Step 2: Check 192.168.1.168.

Step 3: Modify the relevant network parameters such as IP on the right side of the interface

Step 4: Enter the user name (default is admin) and password (default is admin) of the device.

Step 5: Click [Modify] → [Confirm].



Step 6: Click [Refresh] to find the IP address that has been modified, which means that the network configuration is successful.

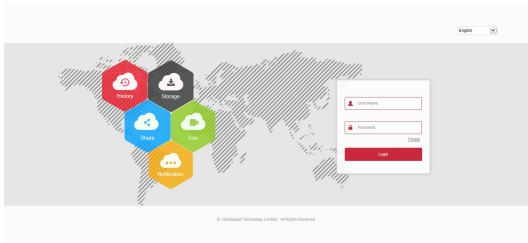


**NOTE:** When configuring network parameters, ensure that the IPC address and the computer's IPv4 address are on the same network segment.

## 2. Modify password

Step 1: Open the IE browser, enter the IP address of IP Camera (if the IP has not been modified, please enter the default address `http://192.168.1.168`), and press [Enter].

Step 2: Enter the user name (default is admin) and password (default is admin) of the device, and click [Login].





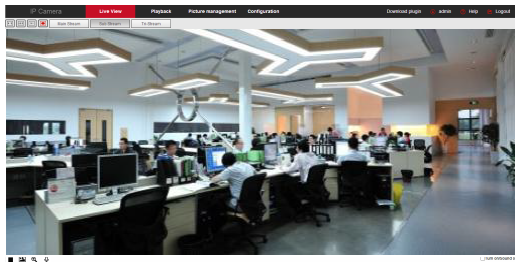
### 3. Real-time Preview

Step 1: Click [Download plugin], download the plug-in, close the browser, and follow the prompts to install the plug-in.

Step 2: Open the browser and log in to the IPC WEB interface again to preview the real-time video.



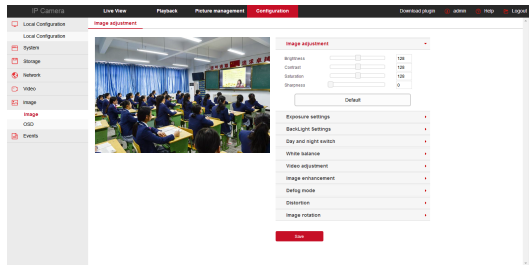
**NOTE:** If the browser you use is not IE, you can directly enter the preview video interface without installing a plug-in.





## 4. Parameter Configuration

Click [Configure] can enter the device configuration interface, there are local configuration, system, local network, video, image, event and other functional configurations. Users can set these functions according to the actual situation of the application scenario to achieve the best monitoring effect.



## 5. Smart Event

### 5.1. Smart Event Configuration

Click [Configuration]→[Events]→[Smart Event] to enter the Smart Event configuration interface, Smart IPC supports Intelligent Detection, Intrusion Detection, Line Cross Detection, Loiter Detection, and People Gather Detection.

- **Intelligent Detection:** In the Smart event interface, click [Intelligent Detection], select the detection mode and [Upload face capture to FTP], click [Save].



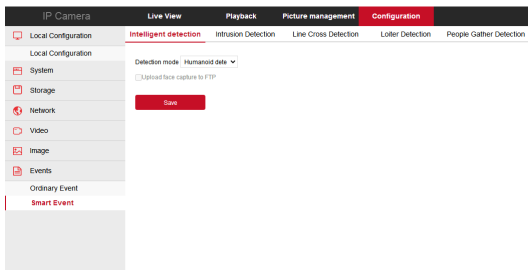
**NOTE:** After the smart detection is set, the smart events (area intrusion detection, out-of-bounds detection, loitering detection, people gathering detection) will trigger the alarm according to the set detection mode.

- **Intrusion Detection:** In the Smart event interface, click [Intrusion Detection] → [Enable], select the Warn Region, draw the intrusion area, time threshold, sensitivity, arming schedule and linkage method.

- **Line Cross Detection :** In the Smart event interface, click [Line Cross Detection] → [Enable], select the Warn Region, and draw the line cross area, set the direction, sensitivity, arming schedule and linkage method.

- **Loiter Detection :** In the Smart event interface, click [Loiter Detection] → [Enable], select the Warn Region, and draw the loiter area, set the time threshold, sensitivity, arming schedule and linkage method.

- **People Gather Detection :** In the Smart event interface, click [People Gather Detection] → [Enable], select the Warn Region, and draw the people gather area, set the proportion, arming schedule and linkage method.



## 5.2. Face Database Management

- **Add the face database:** In the Smart event interface, click [Face database management] → [Face database management] → [Add], enter the base library properties and face contrast recognition threshold, set the base library properties, and click [OK].
- **Face database Import:** In the Smart event interface, click [Face database management] → [Face database Import], select the import method and base library, click [Browse], select the folder where the face image is uploaded, click [OK] → [Import File], and wait for the system to finish uploading the image.



### Caution:

1. Face database adapts JPG files only.
2. Images must not exceed the limit of 100k.
3. The image name is preferably the person name.
4. Each base library supports up to 5000 pictures.

## 6. NVR adds IPC

Before adding devices, please make sure that the IP addresses of NVR and IPC are on the same network segment and do not conflict. Click [Channel] → [Camera] → [Search] under the NVR main menu, check the devices to be added, and click [Add].

**NOTE:** In the main menu of NVR, you can also perform operations such as video settings, video playback, motion detection, and encoding parameter settings.

## 7. iVMS320 Client Access

Step 1: Open your browser and visit <http://www.herospeed.net/>.

Step 2: Click [PC Client] → [iVMS320 (Windows)] or [iVMS320 (Mac)] to download the latest version of the video management system [iVMS320].

Step 3: Follow the prompts to install and add devices to view and manage the devices.

## 8. Mobile App Access

Scan the QR code below to download and install the Aliluya App.



After registering and logging in, you can add the device, and remotely view and manage the device on the mobile phone.

## Disclaimer

The following exemptions or limitations of liability, please pay special attention to:

- As a result of the following reasons, if the product interrupts or terminates the service for any of the following reasons, the company shall not be liable for personal injury or property damage to you or a third party. Failure to install or use properly as required; for the sake of national or public interest; force majeure; your own or third-party reasons (including but not limited to the use of third-party products, software or components, etc.
- The company has not expressed or implied that this product is applicable to special purpose. This product may not be used in medical / safety equipment or other applications where there is a breakdown of the product that could result in life-threatening or personal injury, as well as hazardous or non-humanitarian hazards such as weapons of mass destruction, biological and chemical weapons, nuclear explosions or any unsafe use of nuclear energy use. Any loss or liability arising out of the above use will be at your own risk.
- This product, when properly installed and used, can detect unauthorized intrusion during a particular delight but can not avoid accidents or personal injury or property damage. In your daily life, you should be vigilant and strengthen your safety awareness.
- The Company is not responsible for any indirect, incidental, special punitive damages, claims, loss of property or loss of any data or documents. To the maximum extent permitted by law, the liability for compensation of company is not exceed than the amount you paid for this product.