

Camera

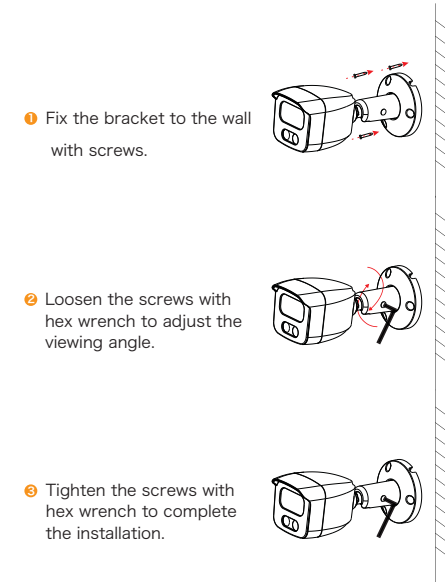
Quick Installation Guide

Remind:

- Fix the expansion rubber plugs to the wall first if it is a concrete wall. Install it directly with screws if it is a wooden wall.
- The installation of all terminal equipment such as controller, display, and recorder related to the camera should be smooth and easy to operate.
- All cables in the control room shall be provided with cable troughs and inlet holes according to the installation location of the equipment. They shall be arranged, bundled neatly, numbered, and permanently marked.
- The pictures in this manual are for reference only. Please refer to the actual product for the final product.

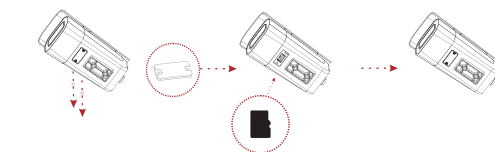
Thank you for using our camera. Please read this manual carefully before use.

Small Waterproof Series

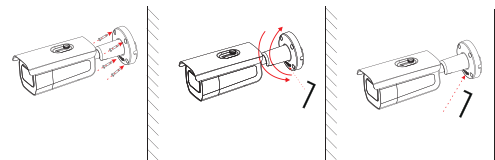


Large Waterproof Series

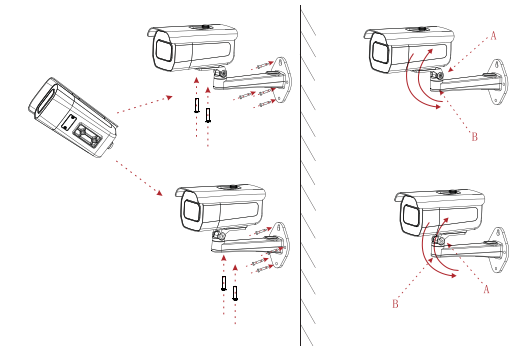
If you have an external card slot, loosen the two screws first, remove the card cover, insert the memory card, and finally lock the card cover.



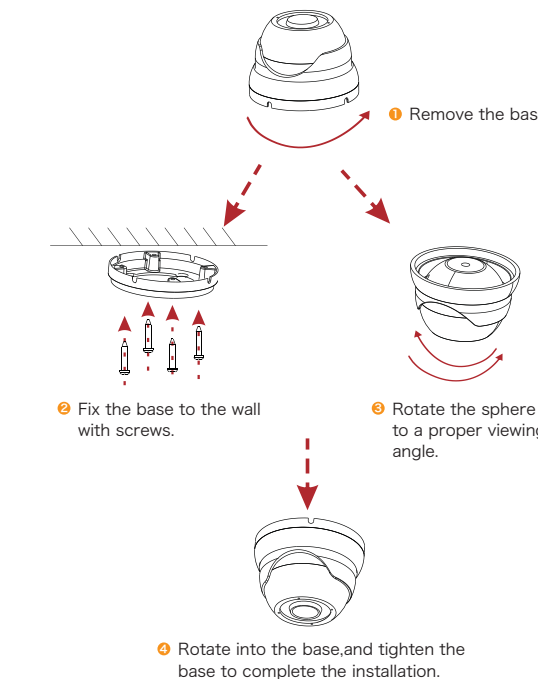
Rear Mounting Bracket Installation



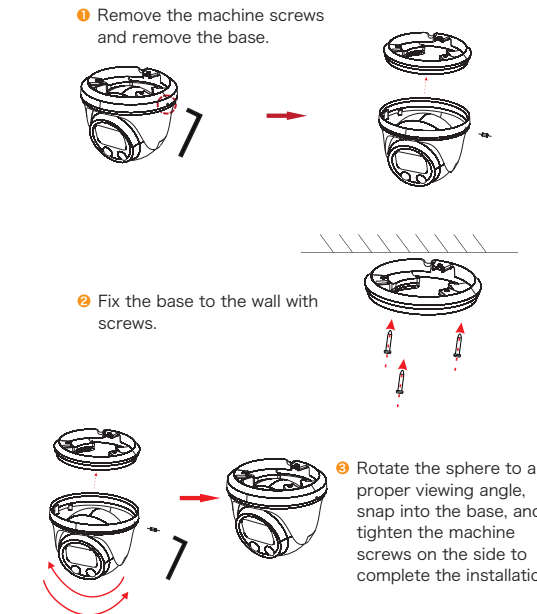
Bottom mounting bracket



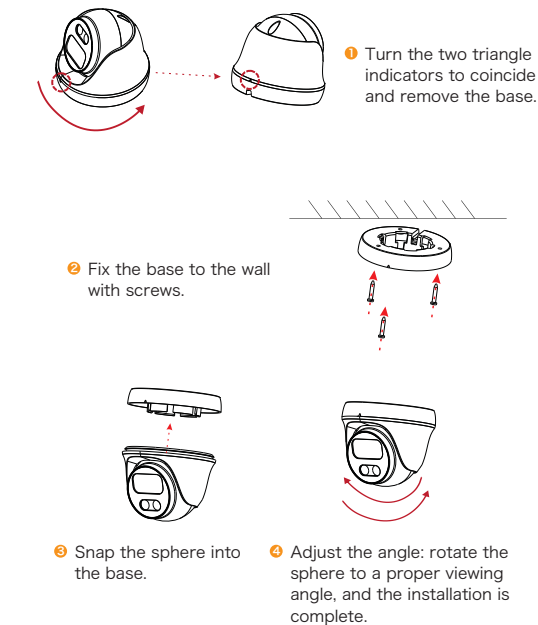
Conch Series



Conch Series



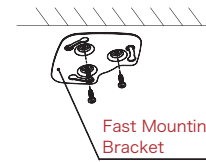
Conch Series



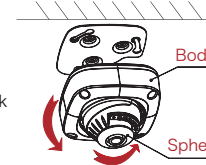
Small Hemisphere Series

Fast Mounting Bracket Installation

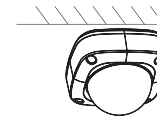
- 1 Fix the quick mount to the wall with screws.



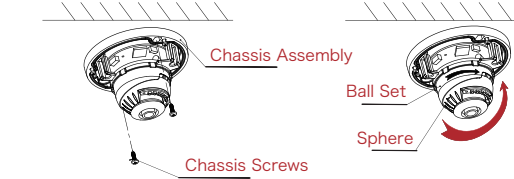
- 2 Adjust the viewing angle by rotating the sphere and then hang the machine into the quick mount by rotating the body.



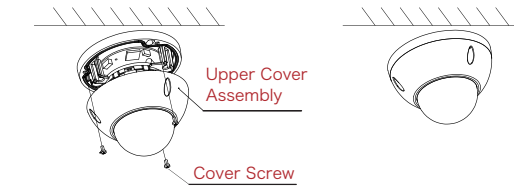
- 3 Installation is complete.



Chassis Installation



- 1 Fix the chassis assembly to the wall with screws.
- 2 Adjust the viewing angle by rotating the sphere.

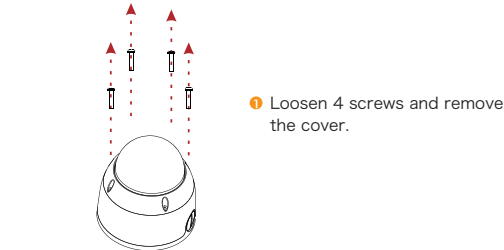


- 3 Lock the upper cover assembly to the chassis assembly with 3 screws.
- 4 Installation is complete.

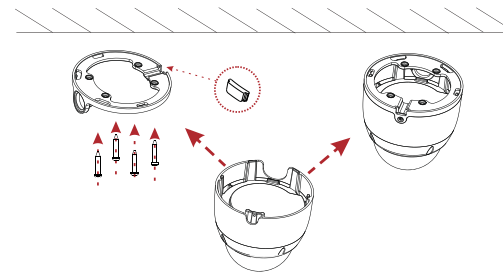
Big Hemisphere Series

Top loading

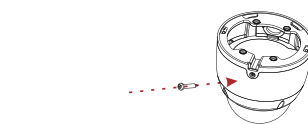
The factory default is the best angle, if you need to adjust:



- 1 Loosen 4 screws and remove the cover.
- 2 Rotate the movement horizontally and vertically to adjust the angle.



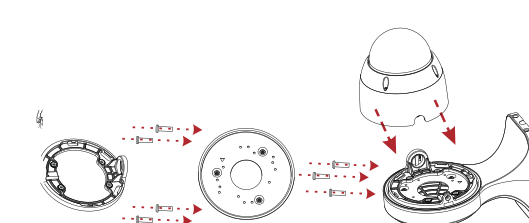
- 1 Remove the rubber plug and fix the base with 4 screws.
- 2 Slide the main body into the notch into the base.



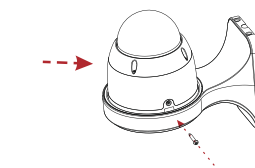
- 3 Lock the screws, fix the ball, and complete the installation.

Big Hemisphere Series

Wall mounting

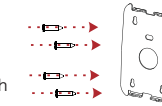


- 1 Fix the base and bracket mounting plate to the bracket body with screws.
- 2 Snap the camera body into the base.

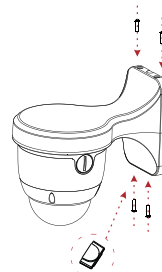


- 3 Fix the camera screw and complete the installation.

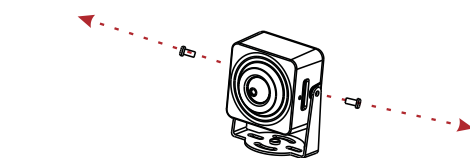
- 4 Remove the fast iron from the bracket body and fix the fast iron to the wall with 4 screws.



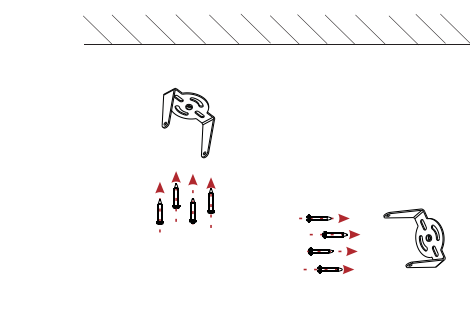
- 5 Remove the rubber plug from the outlet hole, insert the main body of the camera into the quick iron, and fix the 4 screws.



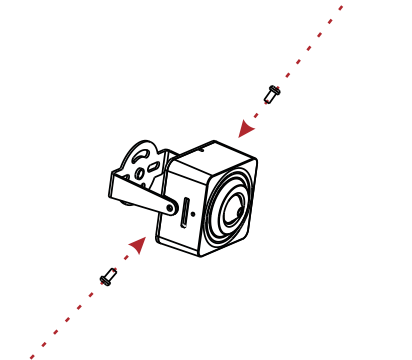
Microcomputer Series



- 1 Loosen 2 screws to separate the bracket from the camera body.



- 2 Use 4 screws to fix the bracket to the ceiling or fix it to the side wall.



- 3 Adjust the viewing angle, tighten the screws, and complete the installation.