

## PRODUCT MANUAL

Intelligence, technology, security

### Download phone App

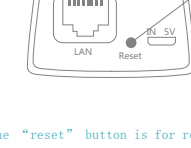
Insert SD card into the device

\*The product does not include SD card please prepare on your own

\*Do not insert or take out SD cards while the device is running

### Download App

Scan QR code with your phone to download App



iVMS380

### Reset the device

Please configure patiently for the first time of use

Power on the device, and wait for voice prompts, and proceed according to voice prompts

“reset” button

1. when you hear “waiting for WiFi smart link configuration”, please use WiFi smart link to configure

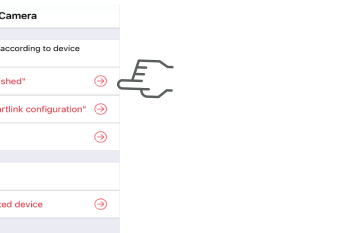
2. when you hear “access point established”, please use AP quick configuration to configure

(the “reset” button is for reference only, actual position may vary depends on the actual product in your hand)

### Network configuration

1. Tap “+” and then tap “Next”.

2. Wait until you hear “Access-Point established” or “Waiting for WiFi smartlink configuration” now you can start connecting the camera to Wi-Fi



3. If you hear the camera voice prompt “Access-Point established” choose method A or B to configure the camera.

### A. AP quick configuration

4. If you hear the camera voice prompt “Waiting for WiFi smartlink configuration”, choose method C to configure the camera.

Android:

● Tap “Access-Point established”, MV+ID will be shown, tap it to proceed.

● Choose your Wi-Fi network, enter the password, tap “Confirm”, and the camera will start connecting Wi-Fi.

● Once you hear the camera voice prompt “WiFi connected”, it will be shown on device list.

● The last step for setting up your camera is to set a password for the camera.

### B. AP Hot spot configuration

● Go to your phone settings, tap “Wi-Fi” and connect “MV+ID”.

● Wait for the status bar to display “wifi” icon, and then return to the App, pull down the device list, the device will be shown on the list.

● You are now able to view live stream on LAN, but in order to achieve remote view, you need to proceed the following steps:

Tap “settings” — “network” — “change to wi-fi station mode”, then choose your Wi-Fi network, enter the password, tap “confirm”, and the camera will start connecting Wi-Fi.

● Once you hear the camera voice prompt “WiFi connected”, the camera is ready to use.

● The last step for setting up your camera is to set a password for the camera.

### C. wi-fi smart link configuration

● Tap “Waiting for WiFi smartlink configuration”, enter Wi-Fi password, you can also enter camera ID, and then tap “Next”.

● Once you hear the camera voice prompt “WiFi connected”, it will be shown on device list.

● The last step for setting up your camera is to set a password for the camera.

### Cloud Disk Service

Cloud disk service is a kind of convenient, economical, secure, private and reliable service, not only protects your records with strictly encryption from the risk of camera broken or stolen, but also can avoid hardware compatibility issues. Couple cameras can share one cloud disk used as a cloud NVR.

1. Tap the icon of cloud services;

\*Please login your account first.

2. Tap “SUBSCRIBE NOW”;

### Subscribe Tutorial

1. Tap the icon of cloud services;

\*Please login your account first.

2. Tap “SUBSCRIBE NOW”;

3. Tap “SUBSCRIBE NOW”;

4. Tap “SUBSCRIBE NOW”;

5. Tap “SUBSCRIBE NOW”;

6. Tap “SUBSCRIBE NOW”;

7. Tap “SUBSCRIBE NOW”;

8. Tap “SUBSCRIBE NOW”;

9. Tap “SUBSCRIBE NOW”;

10. Tap “SUBSCRIBE NOW”;

11. Tap “SUBSCRIBE NOW”;

12. Tap “SUBSCRIBE NOW”;

13. Tap “SUBSCRIBE NOW”;

14. Tap “SUBSCRIBE NOW”;

15. Tap “SUBSCRIBE NOW”;

### Subscribe Tutorial

1. Tap the icon of cloud services;

\*Please login your account first.

2. Tap “SUBSCRIBE NOW”;

3. Tap “SUBSCRIBE NOW”;

4. Tap “SUBSCRIBE NOW”;

5. Tap “SUBSCRIBE NOW”;

6. Tap “SUBSCRIBE NOW”;

7. Tap “SUBSCRIBE NOW”;

8. Tap “SUBSCRIBE NOW”;

9. Tap “SUBSCRIBE NOW”;

10. Tap “SUBSCRIBE NOW”;

11. Tap “SUBSCRIBE NOW”;

12. Tap “SUBSCRIBE NOW”;

13. Tap “SUBSCRIBE NOW”;

14. Tap “SUBSCRIBE NOW”;

15. Tap “SUBSCRIBE NOW”;

### Subscribe Tutorial

1. Tap the icon of cloud services;

\*Please login your account first.

2. Tap “SUBSCRIBE NOW”;

3. Tap “SUBSCRIBE NOW”;

4. Tap “SUBSCRIBE NOW”;

5. Tap “SUBSCRIBE NOW”;

6. Tap “SUBSCRIBE NOW”;

7. Tap “SUBSCRIBE NOW”;

8. Tap “SUBSCRIBE NOW”;

9. Tap “SUBSCRIBE NOW”;

10. Tap “SUBSCRIBE NOW”;

11. Tap “SUBSCRIBE NOW”;

12. Tap “SUBSCRIBE NOW”;

13. Tap “SUBSCRIBE NOW”;

14. Tap “SUBSCRIBE NOW”;

15. Tap “SUBSCRIBE NOW”;

### Subscribe Tutorial

1. Tap the icon of cloud services;

\*Please login your account first.

2. Tap “SUBSCRIBE NOW”;

3. Tap “SUBSCRIBE NOW”;

4. Tap “SUBSCRIBE NOW”;

5. Tap “SUBSCRIBE NOW”;

6. Tap “SUBSCRIBE NOW”;

7. Tap “SUBSCRIBE NOW”;

8. Tap “SUBSCRIBE NOW”;

9. Tap “SUBSCRIBE NOW”;

10. Tap “SUBSCRIBE NOW”;

11. Tap “SUBSCRIBE NOW”;

12. Tap “SUBSCRIBE NOW”;

13. Tap “SUBSCRIBE NOW”;

14. Tap “SUBSCRIBE NOW”;

15. Tap “SUBSCRIBE NOW”;

### Subscribe Tutorial

1. Tap the icon of cloud services;

\*Please login your account first.

2. Tap “SUBSCRIBE NOW”;

3. Tap “SUBSCRIBE NOW”;

4. Tap “SUBSCRIBE NOW”;

5. Tap “SUBSCRIBE NOW”;

6. Tap “SUBSCRIBE NOW”;

7. Tap “SUBSCRIBE NOW”;

8. Tap “SUBSCRIBE NOW”;

9. Tap “SUBSCRIBE NOW”;

10. Tap “SUBSCRIBE NOW”;

11. Tap “SUBSCRIBE NOW”;

12. Tap “SUBSCRIBE NOW”;

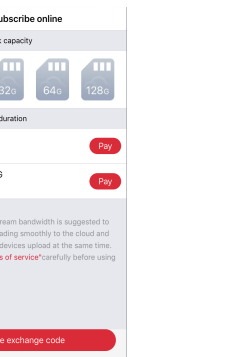
13. Tap “SUBSCRIBE NOW”;

14. Tap “SUBSCRIBE NOW”;

15. Tap “SUBSCRIBE NOW”;



3. Choose a plan and tap the “Pay” to complete its payment to complete service activation.

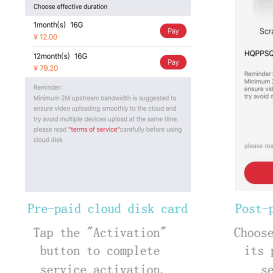


4. Tap the “Use exchange code” and scan the QR code of cloud disk card or enter the serial number of cloud disk card;

\*Cloud disk cards are divided into pre-paid card which has been paid and post-paid card which has not been paid yet.

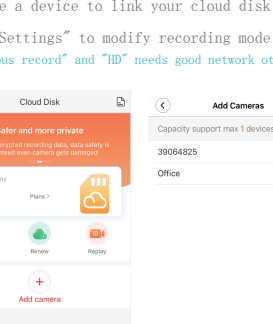


(The back of the cloud disk card)



Pre-paid cloud disk card

Tap the “Activation” button to complete service activation.



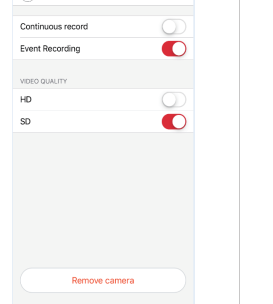
Post-paid cloud disk card

Choose a plan and complete its payment to complete service activation.

## Link Devices Tutorial

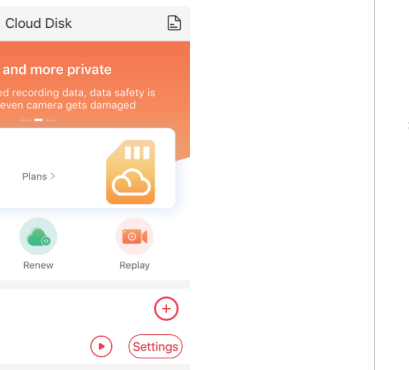
1. Add your devices;
2. Choose a device to link your cloud disk;
3. Tap “Settings” to modify recording mode and video quality.

\*Continuous record and HD needs good network otherwise may cause records loss in poor network.



## Cloud disk replay

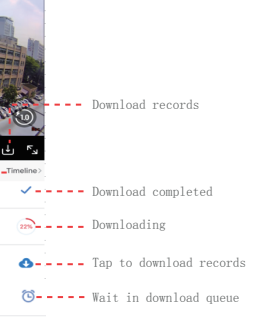
1. Tap “Replay” to enter records list of cloud disk;



## Alarm settings

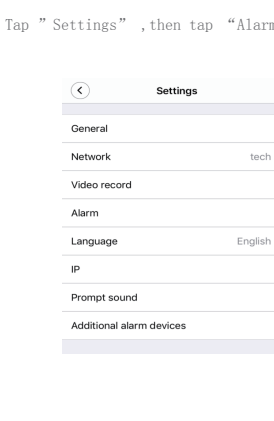
When camera detects moving object, it will send a notification to the App.

Tap “Settings”, then tap “Alarm” enable it.



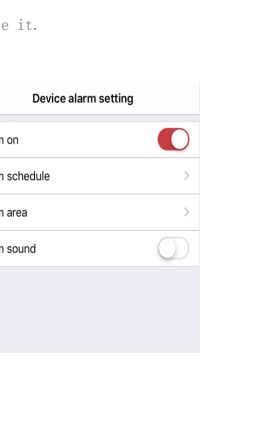
## Replay

Enter preview interface, tap “Replay”, you can choose SD card or cloud recordings, choose a date to find recordings in a specific date.



## Preview

Here are feature introductory pictures for the preview, tap play button to start previewing.



## Motion tracking

Motion tracking is enabled, camera targets and tracks the moving object it detects. You can find the option on preview interface.

Tap “More”, then Enable” Motion track”.

